



888-WARM-GLO

INFRARED PATIO HEATING SYSTEMS

COMMERCIAL • RESTAURANTS
RESIDENTIAL • DECKS AND PATIOS



Modulating Remote
Control Panel

Patented
Performance



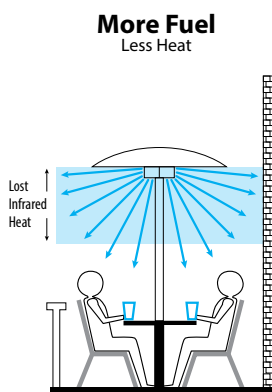


A warm welcome, no matter the weather

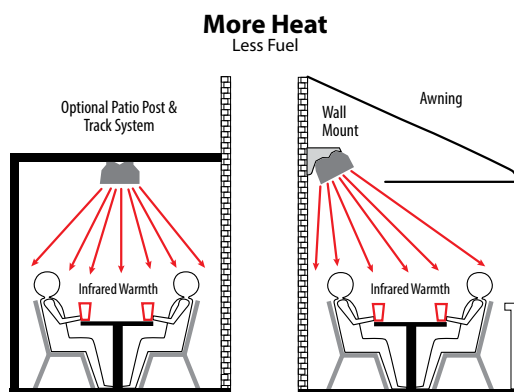
Calcana's energy-efficient infrared heaters create comfortable waves of warmth by heating surroundings — floors, walls, furniture, even people — instead of heating the air directly, like conventional gas heaters do.

Our patented infrared modulating control allows you to easily fine-tune heat levels to beat fluctuating outdoor temperatures and wind. Best of all, our heaters fit into any design and can be discreetly mounted on ceilings or walls, horizontally or angled, using our elegant mounting brackets. Perfect for home and restaurant patios.

Conventional Mushroom Heater



Calcana Infrared Patio Heater



Design Features Include:

Safely Enclosed Flame: The flame is protected from wind and is located inside the low intensity infrared emitter tube. This tube captures heat energy contained in hot flue gases and turns the energy into comfortable heat waves.

Low Clearance to Combustibles: Can be safely installed in locations with awnings.

Slim, Narrow Dimensions: Easy to install in narrow, low overhead clearance locations; suitable for long, narrow street side patio locations.

Overhead Design: No floor space is lost as units hang from existing trellis or other overhead structures. Units can also mount to walls at an angle.

Local or Remote Control: Heaters can be operated remotely, or controls can be located on the units.

Variable Input Burner: Patented, variable input design provides the right level of heat output for each location.

Four Lengths: 5', 10', 15', and 20' lengths are available. Multiple units can be grouped together to achieve any length required.

Certified for Outdoor & Indoor Applications:

Units are design certified to operate in outdoor environments, which include wind, rain, snow and temperatures as low as -40F. For indoor applications, the units can be safely vented through the wall or roof.

Easy-light Ignition System: No pilot lights to ignite by hand, no valves to turn, no thermocouples to replace. By using a reliable 3-try, direct spark, electronic, 100% safety shut off ignition system, units safely and consistently operate in all types of weather with the flick of a switch.

Low Maintenance: No ceramic parts to break or replace. No thermocouples to replace. Emitter tubes do not glow cherry red, therefore are not fatigued to the point of premature failure.

Economical: High-efficient reflectors capture the radiant energy, and direct it to the patio area. Heats more area with less fuel than any other style of patio heater.

Heavy-duty Construction: High quality materials and workmanship eliminates metal fatigue and reflector warp or separation. Stainless Steel options are available.

Natural Gas or Propane: Units available for use with either fuel.

Marine Grade: 316 marine grade option available. For installations close to salt water.

Low Clearance to Combustibles



Stainless Steel Construction



Overhead Installation



Clear Span Mounting



Side Wall Mounting



Patented High Output Series



PH-40 HO
40,000 Btu/Hr
5' length



PH-75 HO
75,000 Btu/Hr
10' length

General Specifications

USA Rating (Input: Natural & L.P. Gas) 0-2000' elevation
CAN Rating (Input: Natural & L.P. Gas) 0-4500' elevation

Standard Output Series

Model	INPUT (BTU/hr)		Length
	Minimum	Maximum	
PH-40 A	20,000	40,000	11.5'
PH-50 A	25,000	50,000	16.5'
PH-75 A	37,500	75,000	21.5'

High Output Series (patented)

Model	INPUT (BTU/hr)		Length
	Minimum	Maximum	
PH-40 HO	20,000	40,000	5'
PH-75 HO	37,500	75,000	10'

Gas Inlet Pressure

Gas	Minimum	Maximum
Natural	4.5" W.C.	14.0" W.C.
L.P.	11.5" W.C.	14.0" W.C.

Standard Equipment

Variable input temperature control panel, modulating gas burner, low noise combustion air blower, visual burner inspection sight glass, air proving safety switch, 3-try spark ignition control, 100% safety shut off valves, 4" heat treated aluminized radiant emitter, aluminum reflector, heat economizer baffle, stainless steel hangers and burner-head, decorative grille, on indicator light. 304 stainless steel construction on High Output Series. Standard units have 304 stainless steel burner box and aluminum reflectors. OPTIONAL: 316 marine grade stainless steel.



Electrical Rating

- DSI Ignition
- 120v, 60 Hz, 1 Amps
- 24 Volt low voltage on/off - modulating control panels

Optional Equipment

- Elbow kit / 180° U-Bend kit for PH-50A and PH-75A
- Sidewall vent kit for Standard Output only
- 90° exhaust elbow for Standard Output only

Gas Pressure at Manifold

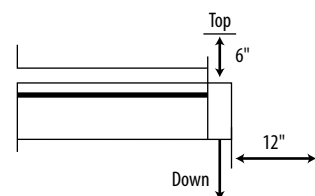
Natural Gas 3.5" W.C.
L.P. Gas 10.5" W.C.
Gas Connection Size 0.5" N.P.T.

Clearance to Combustibles

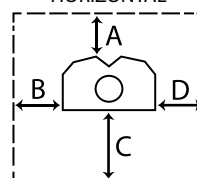
Exhaust End

OUTDOOR APPLICATIONS ONLY

For indoor applications see installation manual.

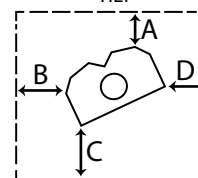


HORIZONTAL



Standard Reflector

TILT



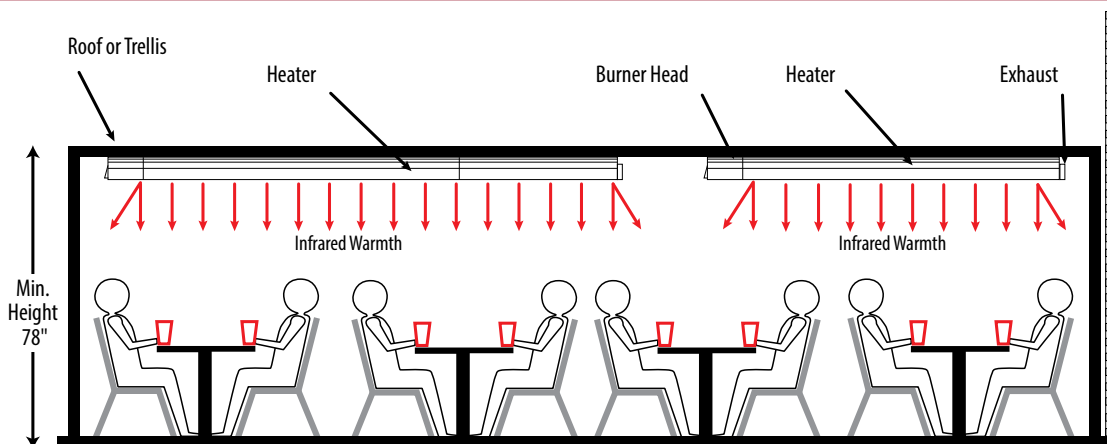
25° to 45° Tilt

Installation Type 1 (Inches)

Input	A	B	C	D
40	4	12	34	12
50	4	12	41	12
75	4	15	46	15
40 HO	8	17	41	17
75 HO	6	12	42	12

Installation Type 2 (Inches)

Input	A	B	C	D
40	4	4	31	28
50	4	4	35	28
75	4	4	40	31
40 HO	8	4	28	25
75 HO	6	4	31	22



DIMENSIONS

Model	Length
PH-40 A	137"
PH-50 A	197"
PH-75 A	257"
PH-40 HO	64"
PH-75 HO	124"
Width of All Units	15"
Height of Heater	8"

Example of a multiple unit installation. In this instance, two units are used to provide a comfortable heating environment. More units can be used to achieve any length or configuration required. *Our design expertise is offered to all customers to ensure proper layout and performance.*

© 2022 Calcana Industries Ltd. All rights reserved. No part of this work herein may be reproduced or copied in any form or by any means - graphic, electronic or mechanical, including photocopying, recording, taping or information storage and retrieval systems - without written consent from Calcana Industries Ltd. The information herein is current at the time of printing, but may be subject to change at any time without notice.

888-WARM-GLO

DESIGNED AND MANUFACTURED IN THE USA AND CANADA

DISTRIBUTED BY



ALFRESCO
HEATING.COM