

www.Alfresco-Heating.com  
888-Warm-Glo

**1** MAIN ELECTRICAL PANEL

**2** SOLID STATE RELAY PANEL

**3** ZONE ANALOG CONTROLLER WITH DIGITAL TIMER

**4** INFRATECH DUAL ELEMENT HEATER

LOW VOLTAGE WIRE

LOW VOLTAGE TERMINAL STRIP

HEATER J-BOX

(REQUIRES 1AMP OF 120V)

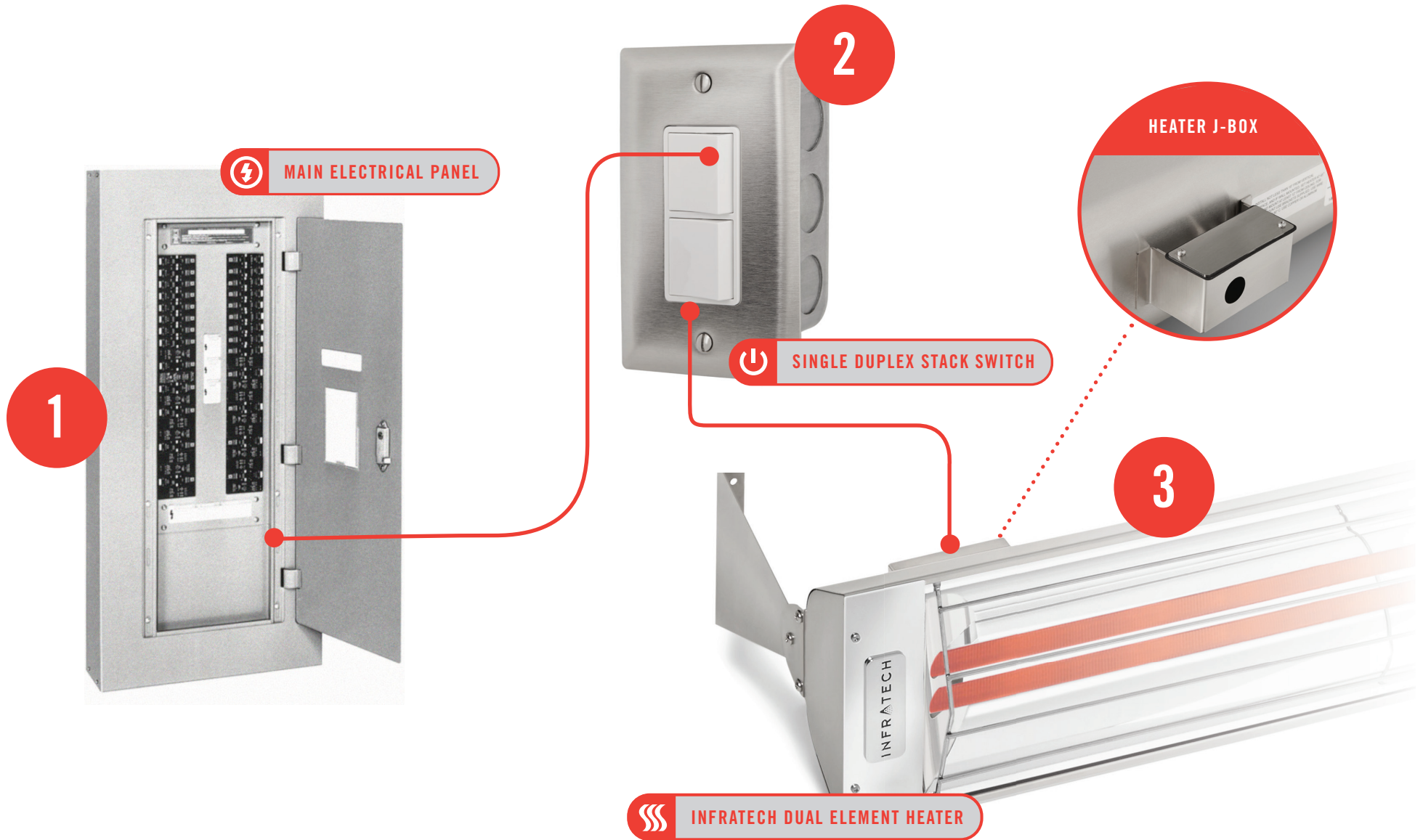
INFRATECH

**INFRA**TECH  
COMFORT

# Duplex/Stack Switches

www.Alfresco-Heating.com  
888-Warm-Glo  
(RATED 20 AMPS MAX PER POLE)

## BASIC FLOW CHART



*Disclaimer: This basic flow chart is conceptual and is not suitable for installation purposes. Every installation needs to follow the actual wiring diagrams supplied with the heaters and controls purchased. All Infratech heaters and controls are only to be installed by a licensed electrician.*

**INFRATECH**  
COMFORT

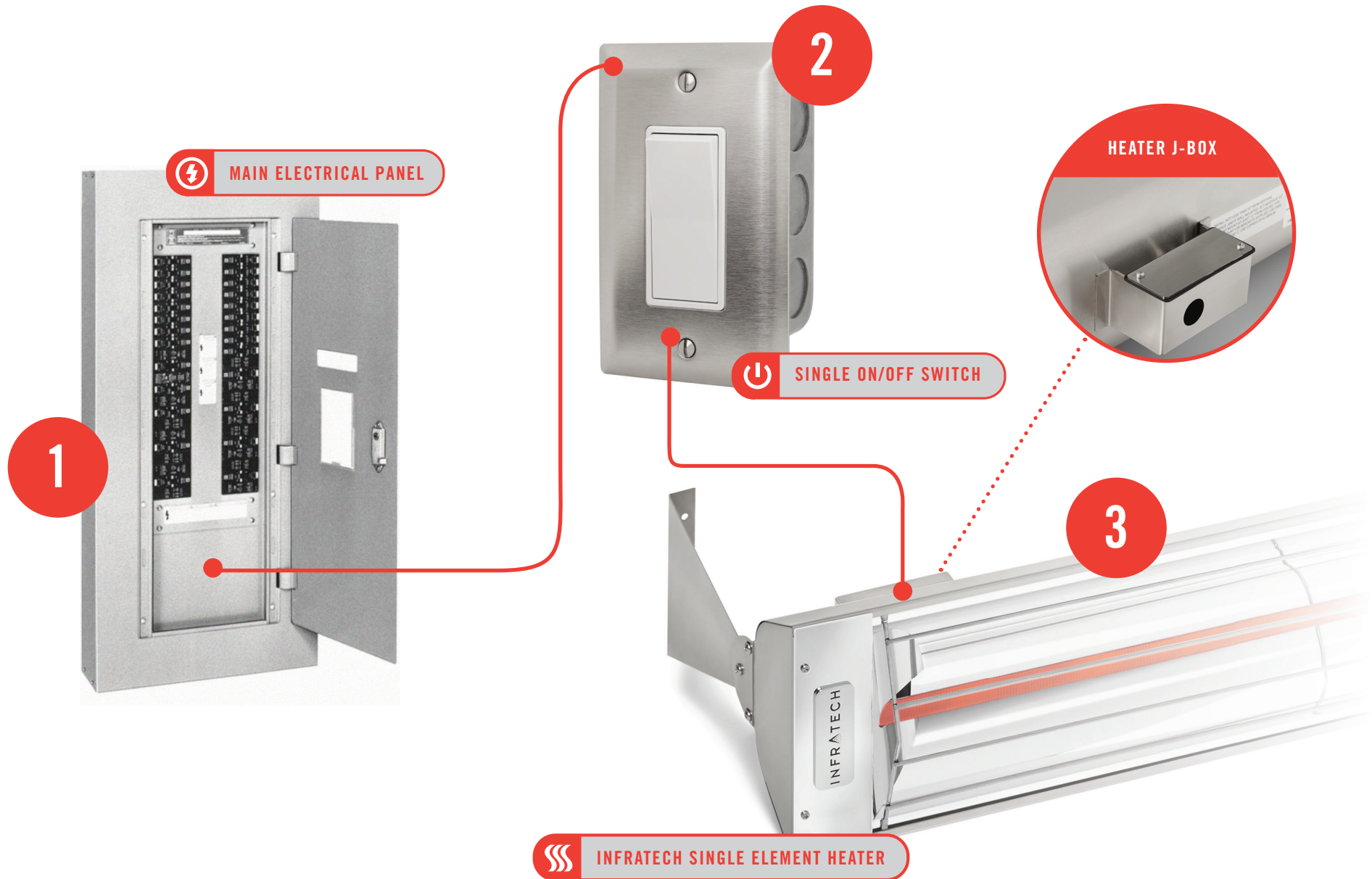
# Simple On/Off Switches

## BASIC FLOW CHART

www.Alfresco-Heating.com

888-Warm-Glo

(RATED 20 AMPS MAX)



Disclaimer: This basic flow chart is conceptual and is not suitable for installation purposes. Every installation needs to follow the actual wiring diagrams supplied with the heaters and controls purchased. All Infratech heaters and controls are only to be installed by a licensed electrician.

**INFRATECH**  
COMFORT



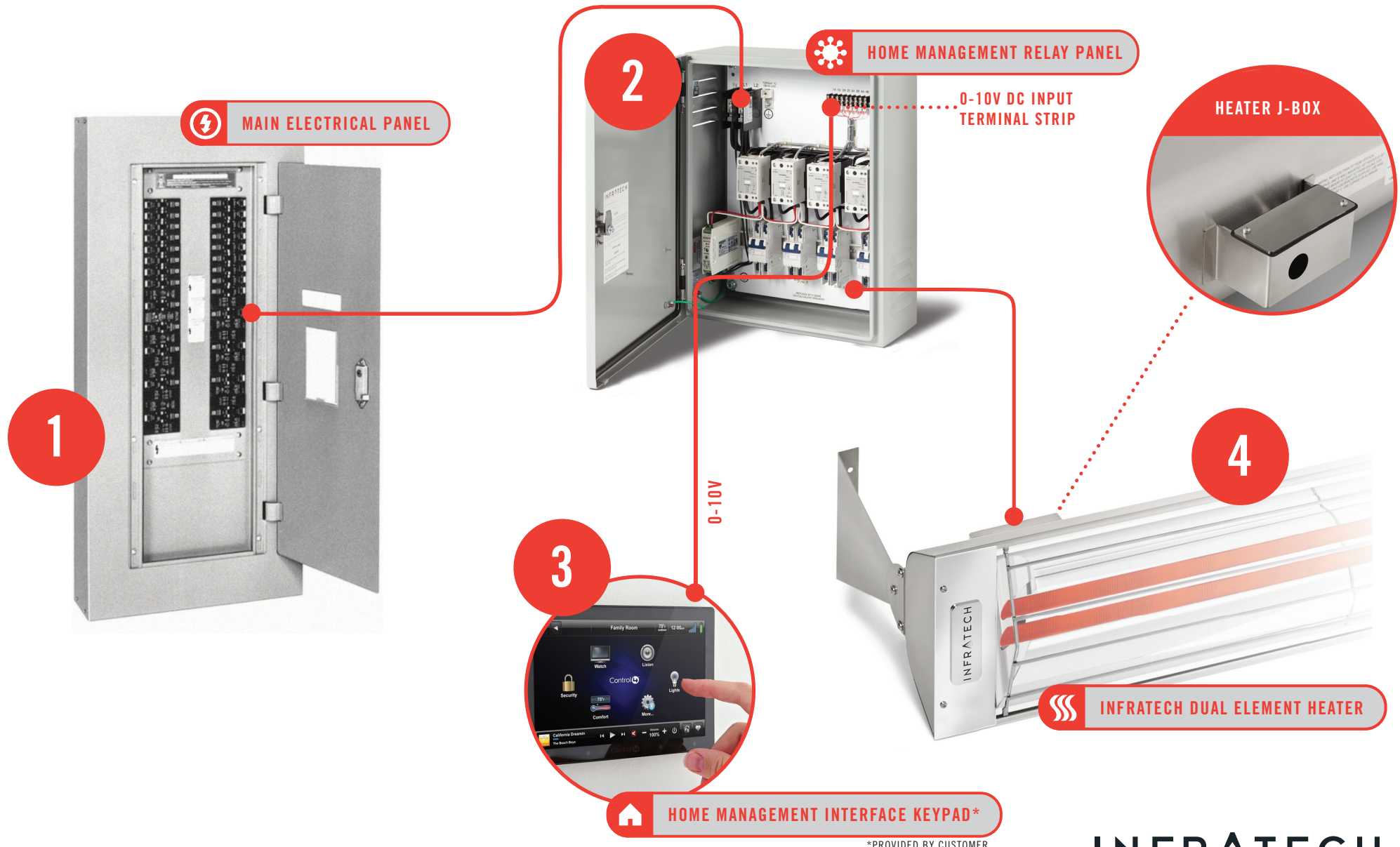
# Home Management Systems

## BASIC FLOW CHART

www.Alfresco-Heating.com

888-Warm-Glo

(REQUIRES 0-10V DC INPUT SIGNAL)



\*PROVIDED BY CUSTOMER

Disclaimer: This basic flow chart is conceptual and is not suitable for installation purposes. Every installation needs to follow the actual wiring diagrams supplied with the heaters and controls purchased. All Infratech heaters and controls are only to be installed by a licensed electrician.

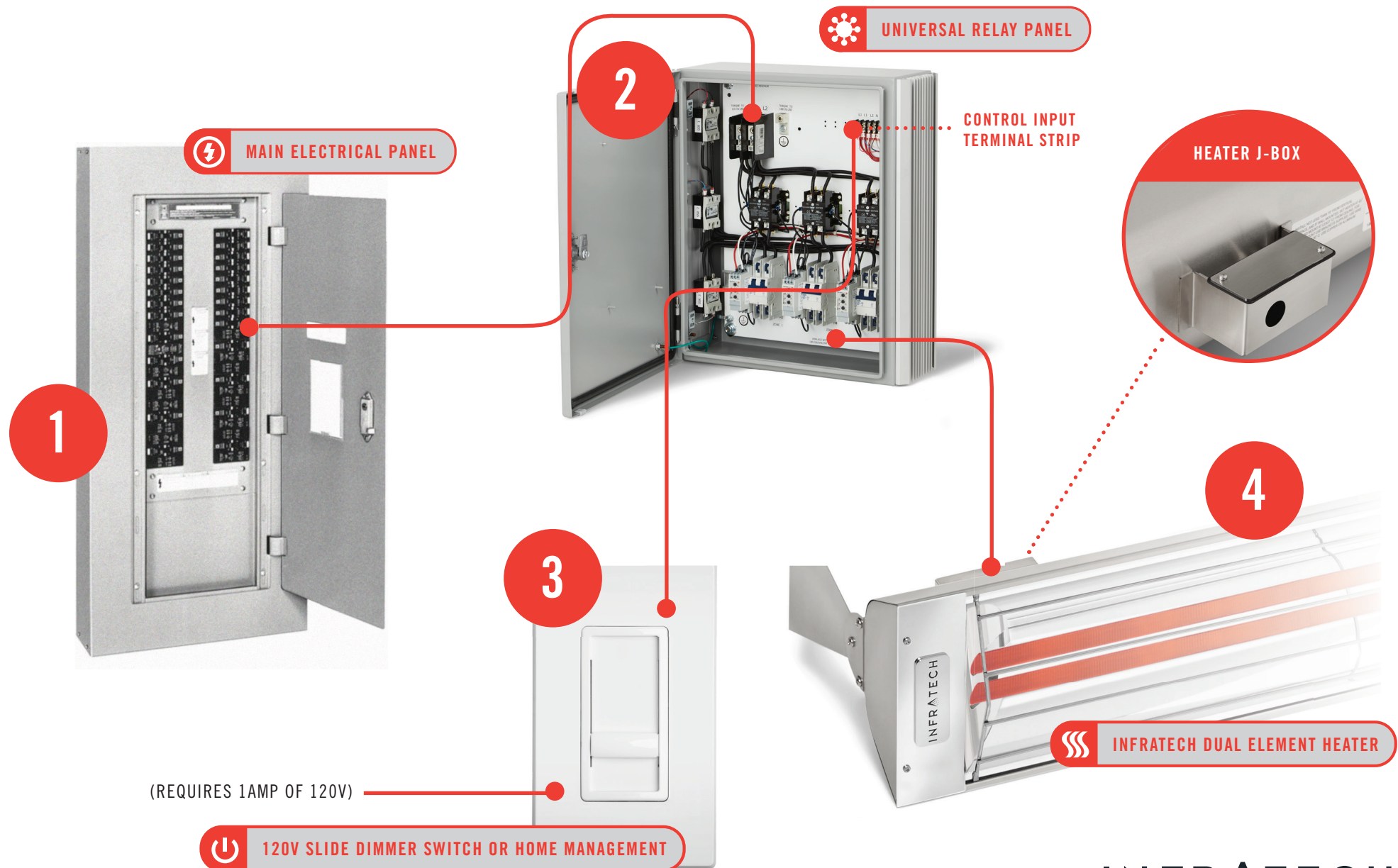
**INFRATECH**  
COMFORT

# Universal Relay Panel System

www.Alfresco-Heating.com

888-Warm-Glo

## BASIC FLOW CHART



Disclaimer: This basic flow chart is conceptual and is not suitable for installation purposes. Every installation needs to follow the actual wiring diagrams supplied with the heaters and controls purchased. All Infratech heaters and controls are only to be installed by a licensed electrician.

**INFRATECH**  
COMFORT