

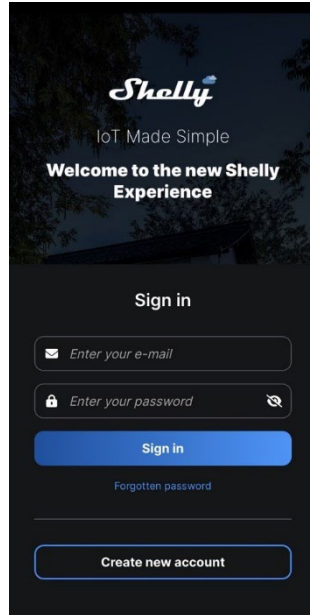
phantomSchwank STP Series

Smart Wireless Control

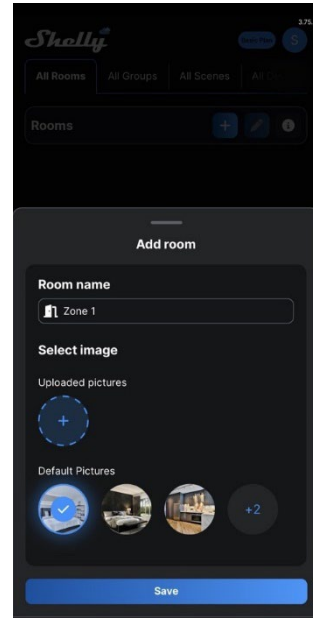
Quick Start Guide



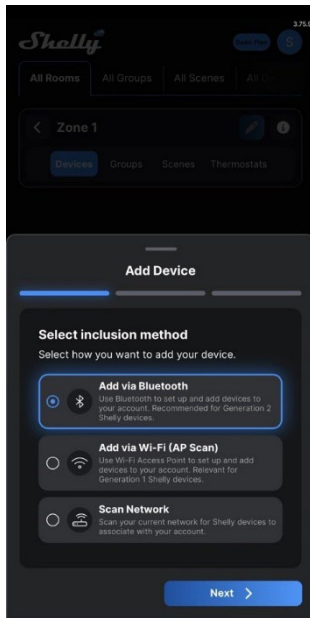
Download the "Shelly Smart Control" App



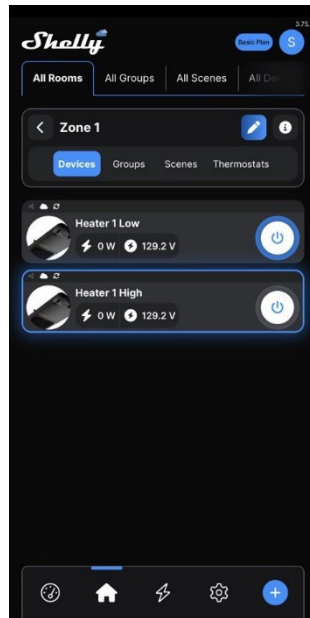
Create a new account and sign in.



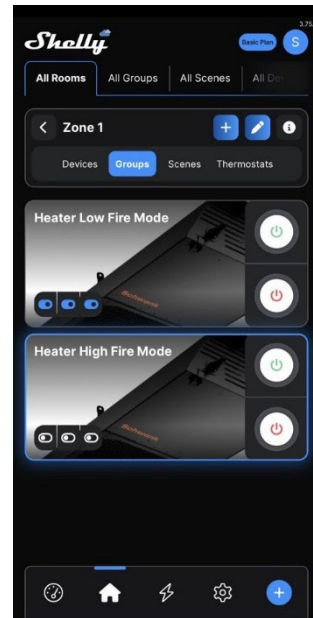
Add room/ zone.



Add device(s) via Bluetooth or Wi-Fi.



Basic operation – 1 heater:
 Turn on low fire mode; Turn on high fire mode; Turn off the heater.



Multiple heaters can be grouped together to be controlled at the same time.

Visit the [phantomSchwank STP Series Wireless Control Manual](#) for full details.

