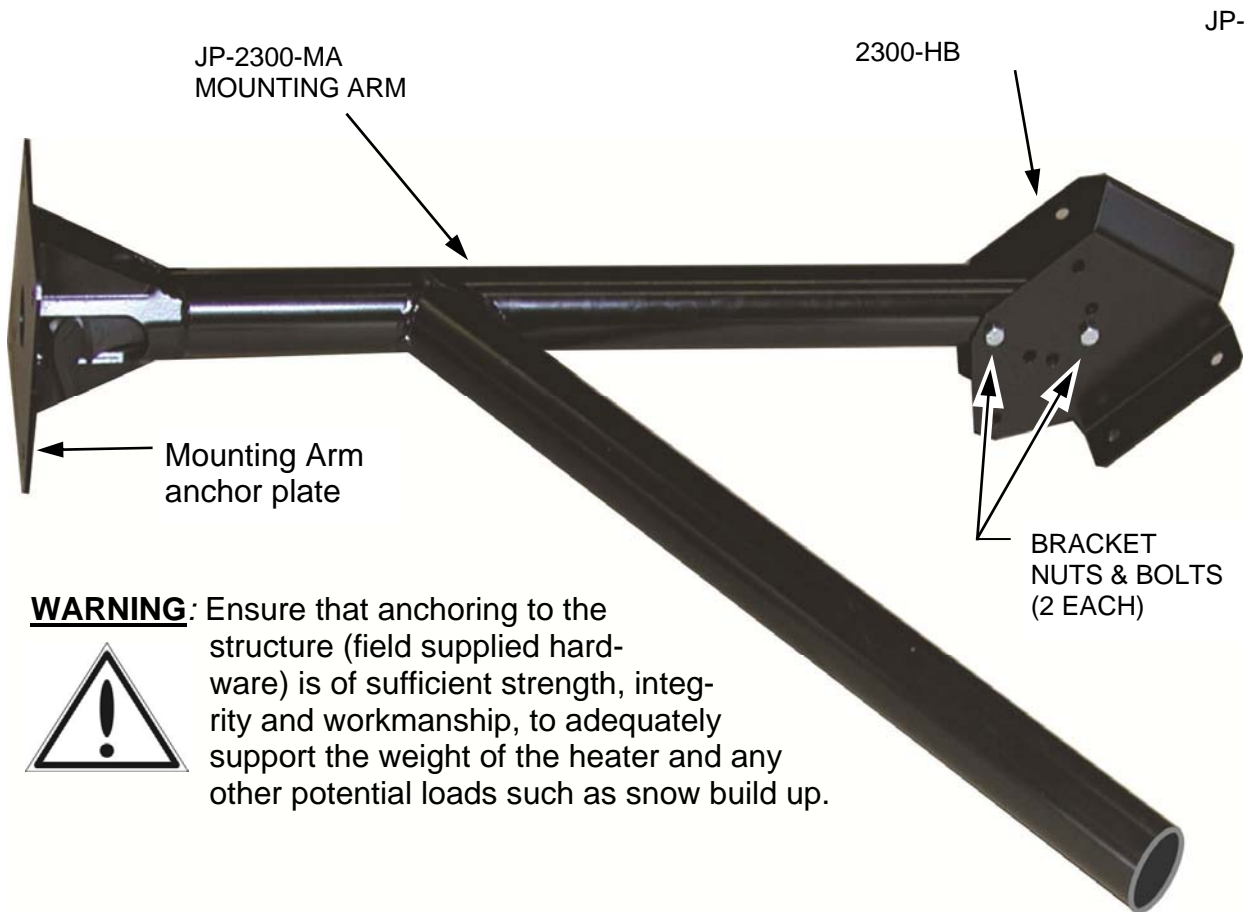


JP-2300-MK MOUNTING ARM KIT

NOTE: MOUNT HEATER AT MAXIMUM 30° ANGLE TO AVOID DAMAGE

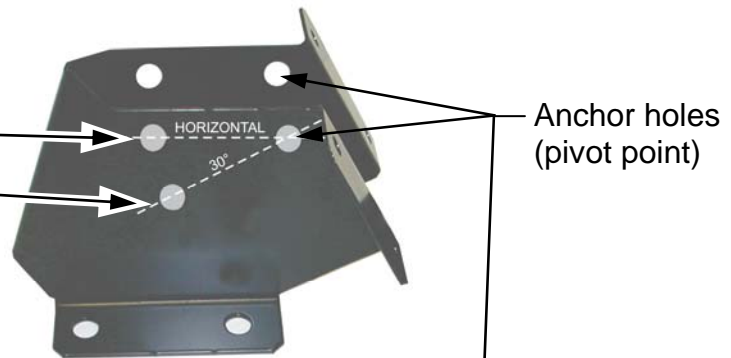


- See next page for assembly of heater bracket to mounting arm for desired heater orientation at horizontal or 30° angle
- Mounting arm dimensions on page 3

NOTE: MOUNT HEATER AT MAXIMUM 30° ANGLE TO AVOID DAMAGE

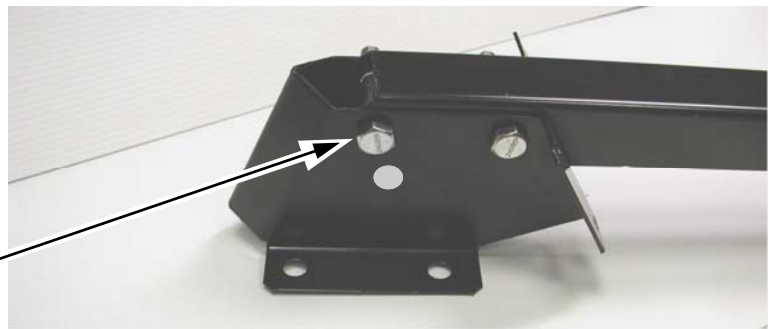
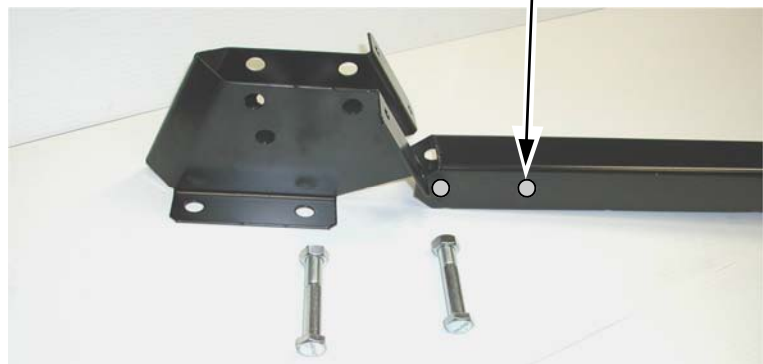
Using pairs of holes, the **heater bracket** allows heater orientation:

- Horizontal
- Angled at 30° (MAXIMUM angle mount)

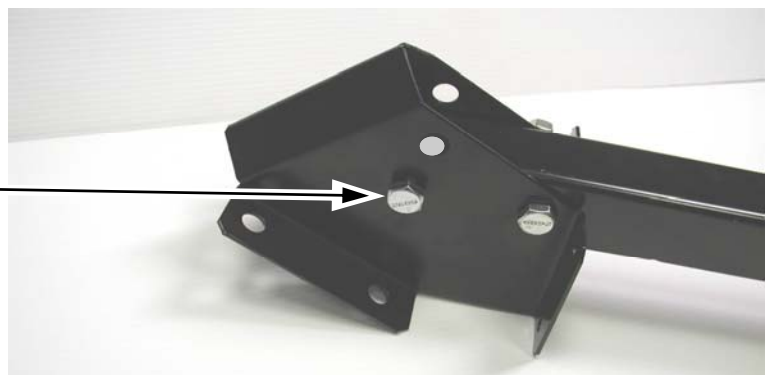


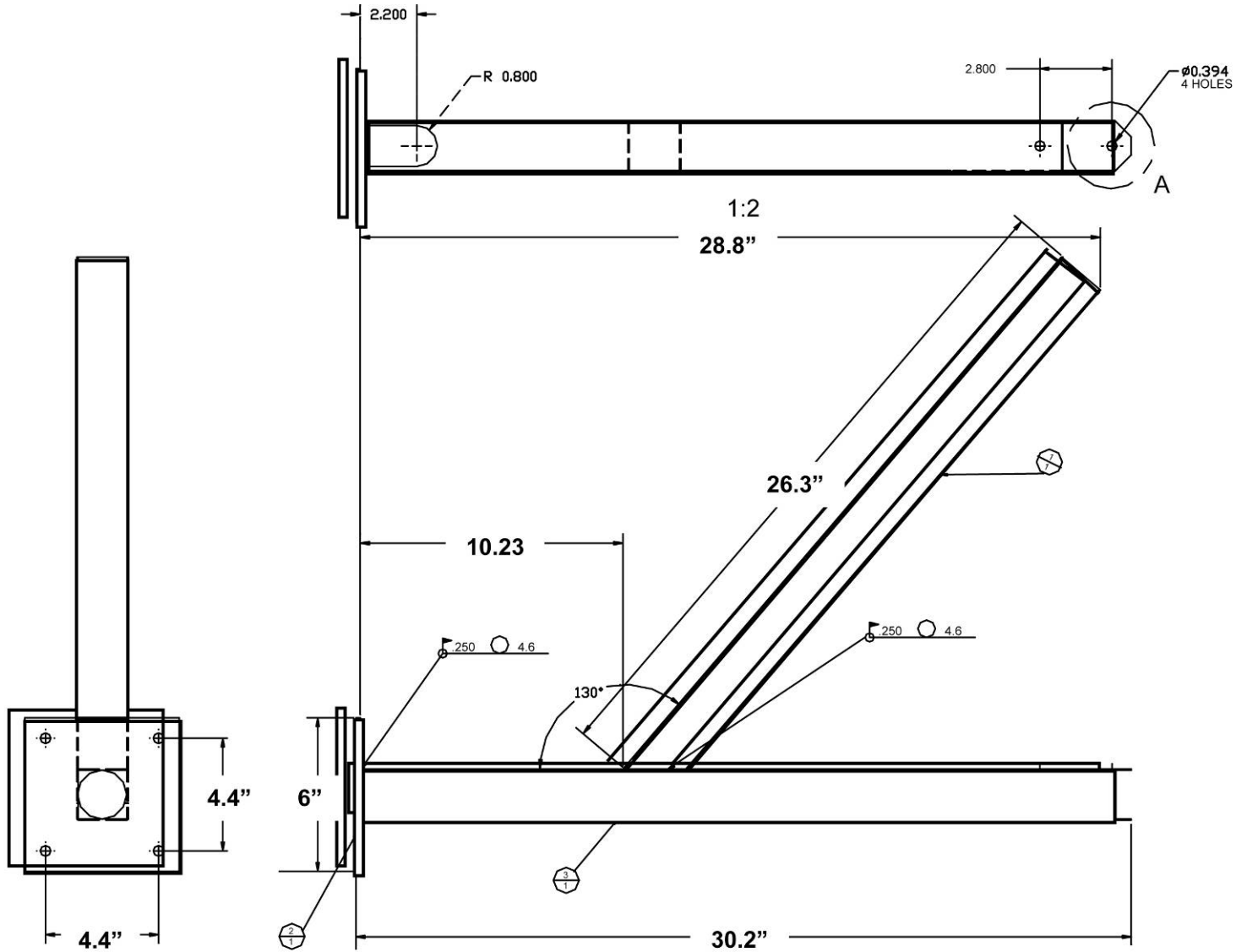
Assemble Mounting Bracket to Mounting Arm using bolts and nuts supplied:

- Align the anchor holes in the heater bracket and the mounting arm, and insert a bolt
- Finger tighten nut on to bolt to allow rotation of the heater bracket
- Align the desired mounting angle holes in the heater bracket to the outermost holes in the mounting arm
- Insert second bolt
- Tighten nuts on both bolts with wrench
- Horizontal mount



- 30° Angle mount





OPTIONAL 2300 / IO-210 MOUNTING ARM